



# IMMERSION SAN DIEGO

School of Discipleship

Giving **ONE** Year  
Pursuing **ONE** Purpose  
Serving **ONE** God  
To Change **OUR** World

*The Father's House Church  
San Diego County, CA*

Thank you for investigating in Immersion San Diego! I'm fully convinced that our program is one of the best places in the world for you to invest a year of your life before venturing into all God has in store for you.

Immersion reflects the passion of this generation—the kind of passion that caused the Apostle Paul to write: “So, my dear brothers and sisters, be strong and immovable. ***Always work enthusiastically for the Lord***, for you know that ***nothing you do for the Lord is ever useless***” 1 Corinthians 15:58 (NLT).

Our mission is to rise up a generation of spiritual leaders who know how to work enthusiastically and effectively for the Lord. We accomplish this by creating a healthy environment for students to...

- Grow in the knowledge of God's Word
- Gain real-world ministry experience
- Develop spiritual disciplines that will fuel a lifetime of growth in the Lord
- Experience being a vital part of a healthy, growing church
- Build lifelong relationships with friends and mentors
- Be transformed more and more into the likeness of Christ!

I know that our program through The Fathers House has an amazing impact on the lives and ministries of young leaders—and we're excited to walk with you through the process of investigation and application. As you read the following pages I trust you'll be able to imagine being here with us, and if you have any questions we'd love the opportunity to talk with you personally. You'll find all of our contact info on the back page.

Grace and Peace,

Benji Horning  
Generations Pastor  
The Father's House

## Who We Are...

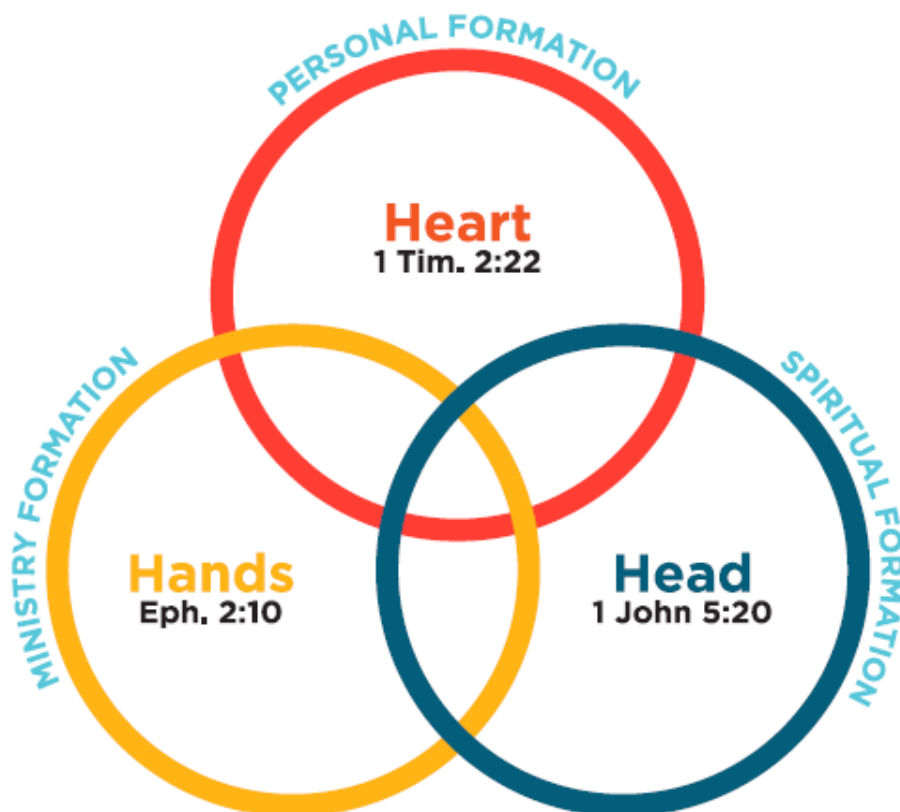
Our ISD School of Discipleship is a leadership development program designed to empower and instruct young adults who are passionate about following Jesus. ISD is a full-time program where students are immersed into three pools of learning: hands-on training, curricular studies, and personal discipleship.

## Our Mission...

ISD at The Father's House exists to raise up generations of young spiritual leaders who will be successful in life and ministry.

## Our Strategy...

The following diagram represents the unique blend of the three main components of our ISD program. A more detailed description follows on the next page.



ISD employs the strategy of “immersion discipleship,” where students are plunged into three pools of learning of which deal with the head, hands and heart.

1. *“Head”—where spiritual understanding is formed.* Classroom studies help students make the Word of God their foundation for life and ministry. Through instruction, dialog, debate, reading, personal study, memorization and meditation, students hone their understanding of what it means to be a rock-solid follower of Jesus and an effective minister of His grace.
2. *“Hands”—where ministry skills are formed.* One of the major elements of ISD is its in-the-trenches approach to developing ministry skills. Students spend a great deal of time each week (often over 20 hours) serving in various ministry capacities within the church and out in the community. They are involved in up-front, public ministry and behind-the-scenes work as well.
3. *“Heart”—where the ministering person is formed.* The most important component of ISD is the focus upon each student’s character and personal discipleship. Many colleges and internships focus heavily on “thinking” and “doing” but don’t concentrate on who the student is “becoming.” This is not the case with ISD. On a near-daily basis, students are encouraged and challenged to move to new levels of faith and excellence in their private and public lives. This personal discipleship is facilitated by interaction with pastors, ISD staff, Host-Families, and other leaders at our church. Discipleship also occurs as students learn to support one another and hold each other accountable.

ISD School of Discipleship offers a unique one-year program. This year, described more fully below, is all about discipleship and service—becoming the person that God created you to be. The following description is an objectives list of the program.

### **ISD Program Objectives: Discipleship and Service**

Each ISD student will...

- Develop a solid devotional life
- Deepen one’s understanding of the Word of God
- Memorize key passages of Scripture related to the life of a growing believer
- Address personal life-issues that could inhibit his or her life or ministry
- Develop disciplines in both personal and public arenas of life
- Develop a passion for excellence in all areas of life and ministry
- Participate in focused on hands-on ministry in the local church
- Participate in hands-on ministry in the community
- Participate in a missions experience outside of our culture
- Grow in one’s understanding of sacrificial leadership
- Demonstrate an ability to discern the leading of the Holy Spirit
- Gain confidence in God’s unique call on one’s life
- Develop a healthy fear of the Lord
- Discover the value of submission to authority

## Our Church...

The Father's House is a vibrant community of faith serving the spiritual and physical needs of many within our community. We are committed not only to disciple those who already know Jesus, but to effectively serve those who have not yet experienced God's saving grace. The mission statement and heart of The Father's House is **Building Solid Lives**. These are not just words but our belief that is profoundly weaved into the fabric of all we do.

Our senior pastor is passionate about reaching the next generation!

"I am convinced that intentional discipleship through Immersion for emerging young leaders is vital not just for their spiritual formation but equally as vital for the churches formation. The tension of the Kingdom according to Jesus is "the new wine" needing a strong and reliable "wine skin" which can be found in the next generation. We believe that they are worth investing our best efforts."

-Pastor Dan Daugherty

To find out more about our church please visit our website: [www.buildingsolidlives.org](http://www.buildingsolidlives.org)

## What Sets ISD Apart...

ISD School of Discipleship is only one of many strong discipleship and training programs around the world. Each program is somewhat different, reflecting the passion of its leaders and the ministry focus of its host church or organization.

One thing that sets ISD apart from other programs is its focus on the local church. We have been called to develop young ministry leaders who will be able to serve the Lord faithfully and fruitfully in local church settings around the country and around the world.

Some of our graduates will go on to university or Bible College; others will go directly into church planting or various ministry positions; still others may enter the business world or start a family. No matter where our graduates go, however, the local church will be there, impacting communities with the power of the Gospel. We believe that our focus on the local church prepares students to be effective, life-long ministers wherever God calls them.

## Our Church Values...

**Dependence:** Remembering that without Him we can do nothing.

*“I am the vine and you are the branches. Those who remain in me, and I in them, will produce much fruit. For apart from Me, you can do nothing.”* John 15:5 (NKJ)

**Integrity:** Living in the light.

*“He who says he abides in Him ought himself to walk just as He walked.”*  
1 John 2:6 (NKJ)

**Relevancy:** Being willing to alter style and preference to reach the next generations without compromising the Word of God.

*“Yes, I try to find common ground with everyone so that I might bring them to Christ.”*  
1 Corinthians 9:22(b) (NLT)

**Reliability:** Doing what you promise, being dependable people who help one another.

*“Putting confidence in an unreliable man is like chewing with a sore tooth, or trying to run on a broken foot.”* Proverbs 25:19 (NLT)

**Excellence:** Giving your highest effort in all that you do.

*“And whatever you do in word or deed, do all in the name of the Lord Jesus.”*  
Colossians 3:17(a) (NKJ)

**Courage:** Facing and conquering your fears and believing God’s every word in every circumstance.

*“...without faith it is impossible to please Him.”* Hebrews 11:6(a) (NKJ)

**Servanthood:** Keeping the attitude of a servant.

*“...the Son of Man did not come to be served but to serve and to give His life a ransom for many.”* Matthew 20:28 (NKJ)

**Safety:** Creating a safe environment for us to grow.

*“He who fears the Lord has a secure fortress, and for his children it will be a refuge.”*  
Proverbs 14:26 (NIV)

## Statement of Nondiscrimination...

In compliance with federal and state regulations, ISD School of Discipleship admits students of any race, gender, color, national and ethnic origin, disability, status as a veteran or any other characteristic protected by law to all rights, privileges, programs and activities to students at ISD.

## **ISD Curriculum...**

Each ISD course is designed to help students grow in the knowledge and wisdom of God. Great care is taken to ensure that students receive a balanced curriculum that will challenge them and equip them for the future. We also take great care to bring instructors into the classroom who will help to mentor our students, not just lecture.

Our current curriculum includes the following list of courses.

### **Through Life Pacific College\***

- Cultures of Ancient Civilization
- Intro to Biblical Exegesis
- Foundations of Ministry
- Spiritual and Discipleship Formation

### **Through The Father's House\***

- Financial Peace University
- Spiritual Gifts and Personality Placement
- New Testament Made Simple
- Old Testament Made Simple
- Bait Of Satan
- Men & Women's Fraternity

\*Subject to change due to availability

In addition to ISD courses all students participate in other seminars and settings in which topics such as prayer, worship, devotional life, personal finance, personal purity, and setting life goals are discussed.

ISD seeks to maintain excellence in our academic standards. Grades are given for each course, and transcripts are kept on each student. Students must complete all assignments at a satisfactory level in order to pass classes and avoid corrective measures.

## Ministry Involvement...

One of the most important aspects of ISD is the involvement our students have in hands-on ministry. To best include students into the ministry life of The Father's House, we integrate students into the various ministries of our church.

1. Children: Our children's ministry (KidBuilders) works with kids from birth through sixth grade.
2. Youth: Work with our Jr. High and Sr. High Youth Ministries through The Bridge and The Core. Every week our church impacts scores of students from our area with big events, large worship gatherings, and small groups for discipleship.
3. Worship and Media: Our church has several worship and media opportunities, each led by qualified and experienced worship and creative art leaders who are eager to train and equip young worshippers.
4. Men's/Women's: Because we view each student as a man or woman of God, they will be involved in all camps/retreats and discipleship processes.
5. Set-up and Maintenance: Since we are a "Mobile Church" that meets away from our offices every Sunday, each student will have the opportunity to be a part of the set-up and tear-down process. Along with this, students will also spend time caring for our permanent office facilities.
6. Young Adult: Each week our young adults gather for a mid-week serve called [the] Exchange, along with on campus ministry and retreats.
7. Administrative: Our church offices are open weekly for the public and to prepare for events and services. Students will help with the logistics of making the business side of church run smoothly.

In addition to the set ministries within our church, there are three other major ways that students engage in hands-on ministry.

1. During most weeks throughout the year a number of hours are devoted to ministry outreaches that take us beyond our church. We minister throughout our city in a variety of service projects.
2. During the ISD year we receive opportunities to minister in a variety of capacities: youth camps, school chapel services, worship leading, youth rallies, serving at conferences, etc. We accept as many of these opportunities as possible to provide our students with a well-rounded ministry experience.
3. At the end of every ISD year we devote two weeks for intercultural missions. This mission trip becomes a highlight for the year, a cumulative expression of what has been learned and experienced during ISD.



## Student Housing...

Each student is placed with a “Host-Family” during his or her time in ISD. These Host-Families have submitted themselves to the leadership of ISD and our church in order to ensure that they will provide a safe and caring environment for our students. These families view their home opening as a ministry of hospitality! They provide room and board, along with oversight and nurture, with a heart to serve an emerging ministry leader. They are not compensated for this ministry, but do this as an offering to the Lord.

All housing situations are unique, and every Host-Home will offer its own blessings and challenges. Some students will have their own private room and bathroom, while others will share space with other children living in the home. Prayerful consideration is used to place each student into the right home environment.

Not only are Host-Families a great blessing to our students, but the students end up being a blessing to their Host-Families as well. When students move into a home they are not simply getting a roof over their head—they are becoming a part of that household. Students aren’t “hotel guests,” but rather are a special extension of the Host-Home’s own family. Because of this, ISD students are expected to share in all aspects of home life that they can, from chores to family gatherings.

Later in the Student Handbook you will find a section entitled, “Guidelines for Living with Host-Families”. Please read this carefully to understand what will be expected of you in this environment. Also, let us know during the application process if you have any particular housing needs or concerns: allergies, special food requirements, etc.

While most students live away from their own homes and families during ISD, our staff encourages students to maintain close contact with their parents and other family members. Finding time to nurture family relationships can be a challenge (not only during ISD, but for a life-time), but through phone calls, emails, visits, and meals during the ISD program and longer visits over the Thanks Giving and Christmas break can continue to prioritize these vital family connections.

ISD Weekly Schedule...				
Mon	Tue	Wed	Thu	Fri
Host-Family Chores, Homework, Exercise, Rest	Worship/Soap (8:00)	Worship/Soap (8:00)	Worship/Soap (8:00)	Family time (9:00- 11)
	Bible Classes (10:00)	Bible Classes (10:00)	Staff meeting (9:00)  Bible Classes (10:00)	ISD "Family Time" & Community Outreach or Office Work Day (11:30-5:00)
			Lunch (12:00)	
	Lunch (12:00)	Lunch (12:00)	Departmental Ministry (2:00-5:00)	
	Departmental Ministry (1:00-5:00)	Departmental Ministry (1:00-5:00)		
	Host-Families, Exercise, Homework	Host-Families, Exercise, Homework	Host-Families, Exercise, Homework	
	Growth Class	The Exchange (6:30-9:00)	DP Class	
	Host-Families, Exercise, Homework	Host-Families, Exercise, Homework	Host-Families, Exercise, Homework	Host-Families, Exercise, Homework
Sat			Sun	
Host-Family Chores, Homework, Exercise, Rest			Sunday Morning Service Set-up 6:45am Start 9:00, 11:00am Tear down til 2:00pm	
			Host-Families, Rest  Bridge (4:30-8:30)	

ISD students have a rigorous schedule, filled with programmed events as well as many other unscheduled opportunities to learn and serve. Students are expected to use their time wisely, ensuring that each commitment is fulfilled with excellence, while also maintaining a healthy lifestyle. This will be a fast-paced, intense year resulting in tremendous growth in students' lives!

Notes regarding the schedule:

- Evenings and weekends are typically filled with things to do—some mandatory, and some optional. Students are expected to take care of all mandatory responsibilities during these hours (including ISD homework, Host-Family chores, exercise and spending appropriate time with Host-Families) **before** time is taken with friends, personal activities, and immediate family.
- When you decide to participate in optional activities, make sure to inform Host-Families that you are taking part in a non-ISD event (even if you will be with other ISD students). This is a form of accountability, as they will be helping to ensure you are taking care of your Host-Home responsibilities.

# ISD Guidelines and Policies...

ISD is an intense leadership development program. We have intentionally designed guidelines for ISD to help keep students ***focused*** on their growth as maturing ministry leaders, and to ***develop patterns*** that may serve them well in the years to come. All ISD guidelines and policies are in effect during the entirety of the ISD year, including weekends, scheduled breaks, times of travel, and mission trip.

## 1. Romantic Relationships

ISD students abstain from romantic relationships. Romantic relationships, while not necessarily negative, often demand much personal and group attention. By “fasting” from these relationships during the ISD, it allows students to focus their attention more fully on the Lord. It also allows for close, unhindered friendships to be established by ***all*** members of the ISD community. The heart of this guideline is to provide a safe place for all students (no matter what their relational background) to grow together in healthy, God-honoring relationships.

*-If you have any questions, comments or concerns please contact the ISD director.*

## 2. Punctuality and Attendance

Part of our credibility as leaders has to do with being where we’re supposed to be, when we’re supposed to be there! When we are late, we not only miss opportunities to serve, but we show a disregard for those who are waiting for us. Because of this reality, we emphasize punctuality in ISD. Students must ensure that they are on time or early to each assignment or other scheduled appointment.

Notes regarding punctuality and attendance:

- When emergencies arise, students ***must*** contact the ISD staff along with others who may be affected by their tardiness or absence—Host-Families, teachers, departmental directors, etc. Make sure to contact these people as soon as the emergency arises.
- **Schedule non-emergency appointments (doctor’s visits, haircuts, etc.) on Saturdays, Mondays or other “off times.”**
- Do not run off-campus errands during the short breaks between classes, etc.
- Any planned absences must be cleared in advance with ISD staff. Please plan family trips or vacation times (other than brief weekend times together) during the two-week Christmas break only. Also, check with ISD staff regarding the Christmas break schedule ***prior*** to booking any travel tickets.

## 3. Physical Fitness

You must exercise! Students are required to participate in any cardiovascular exercise of their choosing, three days per week, for a minimum of one hour on each of these days.

#### **4. Use of Time on Campus**

ISD students do not have “down time” while on the church premises. While this is true, there certainly will be times when students will find themselves in-between assignments, wondering what to do. These “in-between times” need to be filled with productive activity (remember that you are a leader, serving the Lord and other people with your time). You are responsible to always have a plan of what to do when in-between assignments. You may choose to read the Bible, journal, memorize Scripture, pray, complete homework assignments, read books, or work on organizing or cleaning an office. Students may not access social networking websites (Facebook, Twitter, YouTube, etc.) during ISD hours. Students are to limit their use of cell phones during INC hours and are to turn them off during classes, meetings or times of worship or ministry. Students may not play video or computer games while on the church premises.

#### **5. Movies and Entertainment**

During ISD, all students refrain from viewing movies that have received a rating of “R” or higher. Because many students come into ISD without ever having any entertainment restrictions placed upon them, this policy is intended to provide all students with the opportunity to grow in their discernment as related to entertainment choices.

Students are also expected to use sound judgment and spiritual maturity when choosing the TV programming they watch and the music to which they listen. Students may not watch or listen to morally objectionable programming at any time. **You must ask permission for any movie that has a rating of PG-13 or higher.**

#### **6. Curfew**

Monday-Thursday nights, curfew is 10:30 PM for students. Friday, Saturday and Sunday nights, curfew is 11:30pm. The reason for a curfew is to remind students that they need to prioritize their Host-Family relationships, homework and rest. On most evenings, students should be at home at the conclusion of ISD scheduled activities. Any adjustments to the curfew must be cleared in advance by Host-Parents—do not call at curfew for an extension except in an emergency. Adjusted curfew times should not be needed on a regular basis.

#### **7. Cars and Transportation**

Each student should plan to provide for their own transportation and auto insurance during their time in ISD. Because students are housed over a wide area, ride-sharing is difficult. Those who are unable to have their own transportation, for whatever reason, must seek an exception from ISD at the time of their application interview.

Students must follow all laws when driving. Seatbelts must be worn by all occupants of moving vehicles. There is absolutely no texting and all phone calls must be hands free when in the car. Students must maintain a valid driver's license and auto insurance policy for the entirety of the ISD program. Proof of Insurance is required. Students' vehicles will be properly maintained and cleaned. Car repairs are the responsibility of each individual student.

*During the duration of this program, you are not allowed to ride in a car alone with the opposite sex. You must contact an ISD leader if an emergency occurs and receive approval before driving with the opposite sex alone.*

## **9. Prohibited Activities**

ISD students will abstain from all immoral, illegal and unethical activities. This includes lying, hazing, and the use of inappropriate, foul, or objectionable language or communication in any form. Students are also required to refrain from the consumption of alcoholic beverages and the use of tobacco products.

## **Guidelines for Dress...**

Students are ministry leaders representing the Lord, ISD, and our church. For this reason, basic guidelines have been established for ISD attire. We ask that extreme styles be avoided, and that students dress in a way that brings honor to the Lord, rather than bringing attention to one's self. Students are also to refrain from getting any new piercings or tattoos during ISD. *Sunday morning we ask that you have on your "sunday's best". Nicer jeans are permitted but should be accompanied with a collared shirt or blouse.* You will be asked to wear your ISD gear on certain Sundays, and during the Friday outreaches. Always have your gear washed and ready to wear if requested to do so.

## **Guidelines for Living in Host-Homes...**

Host-Families are an incredible and integral part of the ISD program. Not only do they provide an essential service to those in ISD by opening their homes, but they also are involved in the discipleship process that Jesus is working in the lives of students.

We ask students to keep in mind the tremendous privilege it is to live at home with parents or in the home of Host-Families while in ISD. Those who are opening their homes have sacrificed greatly, enabling students to dedicate themselves to God during the ISD program. It is imperative for students to live in their Host-Home in such a way that they are a blessing to these special families. Remember that home life is often a more accurate measure of one's growth in the Lord than how one lives in any other setting.

Keeping these things in mind, students are required to adhere to the following guidelines.

### **General Guidelines:**

1. You must move into your Host-Home between one and three days prior to our program start date.
2. You will be sensitive as to how their Host-Family's homes function and will remain flexible and teachable at all times.
3. You will be considerate in word and deed at all times.
4. You will dress modestly whenever you are in public areas of the home.
5. If you are the last one to bed at night, you will be quiet and make sure all lights, fans, radios and TVs are turned off, as directed by your Host-Family. You will also make sure all doors are locked.
6. If you wish to invite others over, you must have prior approval from your Host-Parents. You will be sensitive and avoid putting Host-Parents on the spot in front of potential guests.
7. Your vehicles will be properly maintained and cleaned. Do not depend on Host-Families for gas or repairs.
8. You must contact an ISD leader to receive permission to spend the night at anyone's house other than your host-family, even if it is another host home. Spending the night at other people's houses should be very minimal during the program year.

### **Time Guidelines:**

8. You will abide by curfew hours. Students must be at home by 10:30 PM on Monday-Friday evenings, and by 11:30pm on Saturdays and Sundays. On most evenings, you should be at home at the conclusion of ISD scheduled activities. Any adjustments to the curfew must be cleared in advance by Host-Parents—do not call at curfew for an extension except in an emergency. Adjusted curfew times should not be needed on a regular basis.
9. You will wake up early each morning for classes, church or work. You may sleep no later than 9:00 AM when morning events are not scheduled, unless a later time has been pre-approved by Host-Parents.
10. If you will not be home at a prearranged time, you will call ahead (at least one hour) whenever possible in order to advise your Host-Family.
11. Many Host-Families have found it helpful to set aside one evening each week as a "family night." You will reserve this evening for spending time at home at your Host-Parent's discretion. We ask that you'd make your host family dinner once a week during this family night.

### **Noise Guidelines:**

12. When others are asleep in the home, you will be very quiet to avoid being a disturbance. Remember to move quietly about the home without slamming doors and cabinets or playing loud music.
13. If you have a stereo in your room, you will keep the volume down or use earphones.

### **TV, Internet and Phone Guidelines:**

14. You will ask permission to turn on the TV and be sensitive to the viewing times of your Host-Family. You will be extremely selective about how much TV you watch and what programming you view. This applies to video and movie viewing as well. All TV and video viewing will conclude no later than midnight
15. You will not tie up the Host-Family's phone line. Gain their permission before using the home phone, keep calls brief, and always use a pre-paid calling card when calling long distance.

### **Food and Kitchen Guidelines:**

16. You must discuss kitchen etiquette with your Host-Family. Food is expensive, and most families have limited food budgets. You will be considerate about the amount of food you eat, and will not eat anything (from the refrigerator, freezer, pantry, etc.) without permission. Do not consume the last amount of any item without first finding out if someone else had intended to eat it.
17. When you use the last of something that can be easily remade (tea, juice, ice, etc.), you will remake it immediately.

### **Cleaning and Chore Guidelines:**

18. As a contributing member of your Host-Family, you will participate in regular day-to-day household activities, like cleaning up after dinner, sweeping and vacuuming. In addition, you will complete a longer "weekend chore" (typically a 2-3 hour project) as defined by your Host-Family. It is your responsibility to dive in and help around the house. See a need and fill it!
19. When you make a mess, you will clean it up immediately without being asked.
20. You will do your own laundry on a regular basis at times specified by your Host-Family. Do not leave clothing in the washing machine, dryer, or laying around the laundry area or house. Put clean clothes away immediately.
21. You will keep your room, and other areas of the house you use, clean at all times. You are to make your bed before leaving the house morning. Bathrooms are to be kept clean at all times, according to Host-Family standards.

While these guidelines have been established by ISD, Host-Families may have additional standards and guidelines as well. Each family will manage their home, integrating these guidelines as well as their own into their unique family structure. It is our desire that ISD students would be comfortable in their home environments and confident in their ability to discuss any aspect of their living arrangements with their Host-Family as well as with the ISD staff. If you have questions about these guidelines, or have a particular situation that needs attention, please contact the ISD staff. The ISD Director must first clear any changes in where a student is living.



## Host-Family Evaluations:

Once a month, Host-Parents fill out an evaluation indicating how their student is doing within their home environment. Both a Host-Parent and the student are to sign this evaluation, indicating that it has been discussed. Students are responsible to turn in these evaluations at the time designated by the ISD Staff. Evaluations must be sealed in envelopes marked with the student's name.

## Corrective Action...

**The Ding System:** Dings are a form of correctional input, given for not following ISD guidelines. Each ding represents two hours that the student will serve at the church during their free time on a Monday. Ding recipients will report to a designated staff member who will direct the student to assignments needing completion around the church. Students will need to bring a sack lunch to be eaten when they are serving past noon.

Dings may be awarded for any infraction including, but not limited to, the following:

- Not following leaders instruction
- Parking in undesignated areas
- Consistent attitude issue
- Inappropriate language and/or talk
- Breaking host home guidelines
- Homework not turned in on time
- Not turning in your SOAP journal completed on time (worth 3 dings)

**Clean Car Policy:** Students are required to keep their car clean inside and out. Students will have one day to clean it after being warned. We represent ISD and our church with all that we are, and that includes our cars. There may be opportunities where ISD student cars will be used for random projects or for people and we want it to represent our church well.

**Housing Probation:** Housing probation results when a student is dinged repeatedly for the same infraction and does not change his or her actions. During housing probation, students must forgo all personal or optional activities, and be at their Host-Home whenever they are not on the church campus for assigned ministry responsibilities. This corrective action should serve to help provide a student with extra time to re-prioritize his or her schedule and activities.

Housing probation may only be given two times for the same kind of violation. If the same kind of violation happens a third time, a student will be suspended from ISD, usually for three to five days. During a suspension, students will have various appointments scheduled for them with church leaders. Any suspension from ISD automatically triggers communication both to the student's parents and to the student's home-church pastor. Following a suspension, should a student again engage in the same kind of violation, the student will be dismissed from ISD.

## **Dismissal Policy...**

It is always the goal of ISD staff to seek restoration with students whenever ISD policies or guidelines have been violated. Corrective actions, short of dismissal, are always considered in order to bring about restoration. If, however, corrective actions have not helped a student to keep from repeating violations, or if the violation was significant, dismissal from ISD could become necessary. Dismissal could result in the loss of a significant portion of a student's tuition (see "ISD Finances" for further information).

## **ISD Medical Policy...**

1. Students are responsible for their own health insurance while they are in ISD. Proof of Insurance is required.
2. Should an injury occur on church grounds or while traveling in a church owned vehicle, students are covered by general church liability and vehicle insurance.
3. If a student has any medical problem or chronic condition, it is strongly suggested that they be under the care of a local doctor. Please indicate any chronic conditions when applying for ISD.
4. All major dental work must be completed before entrance into ISD.
5. While in ISD, all non-emergency medical or dental appointments should be scheduled during the student's free time.
6. If ISD travels through foreign countries that require specific vaccinations, students will be required to obtain these inoculations at their own expense.
7. Before coming to ISD, students should discuss with their parents/guardians the way they should be prepared to handle emergencies or sickness requiring a doctor's care.
8. Students staying with Host-Families should have at least \$100 cash set aside in case they need to visit an emergency clinic in our area.
9. Please call the ISD office if you need help locating health insurance options.

## INC Finances...

Student Tuition Breakdown	
Application Fee (applied to tuition)	\$50
Tuition	\$5,100
Bi-weekly Stipend (optional)	\$1,080
iPad (optional)	\$320
Mission Trip (optional/fundraise)	\$1,500
<b>Maximum Total Tuition</b>	<b>\$8,000</b>
<b>Minimum Total Tuition (tuition without the optional expenses)</b>	<b>\$5,100</b>
Student Cost Breakdown	
Tuition & Books	\$2,210
Mission Trips x2	\$2,800
Retreats x3	\$585
Apparel	\$125
Bi-weekly Stipend	\$1,080
iPad & Software	\$400
Operations & Outreach	\$600
Meals	\$200
Total Cost	\$8,000

\*Checks should be made payable to The Father's House.

If you wish to take advantage of our payment plan, you must notify our office in writing, requesting a payment plan agreement, at least one month prior to our program start date. Our payment plan is as follows: A \$2,000 minimum deposit is due in the ISD office one month prior to our program start date. A payment of \$1,500 is due one week prior to our program start date (\$3,500 total into us by the start date). The remaining balance will be divided into five equal payments of \$500 each month from Oct-Feb. If a payment is missed, the student will not receive his or her stipend until payment is made. If 30 days have passed and payment has not been made, the student will be dismissed from the program. Students are responsible for all work missed due to suspension.

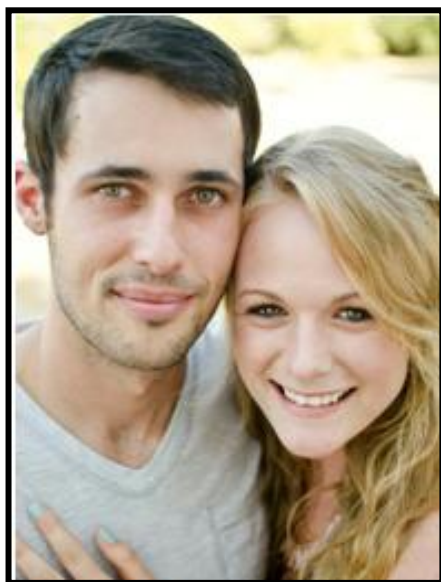
Students who have paid the full tuition prior to the ISD start date are eligible for a partial refund if, for any reason, they depart from ISD during the first three months of the program. During the first month of the program, 80% of all fees will be refunded. During the second month of the program, 75% of all fees will be refunded. During the third month of the program, 50% of all fees will be refunded. After the third month, no fees will be refunded. Students utilizing a payment plan are ineligible for a refund at any time. This refund policy applies whether a student chooses to depart from the program, or whether a student is dismissed.

## Important ISD Dates...

Application due	May 16 <sup>th</sup>
Host home orientation	August 31 <sup>st</sup>
Move in days	September 8 <sup>th</sup> -13 <sup>th</sup>
ISD Orientation	September 12 <sup>th</sup>
Fall retreat	September 15 <sup>th</sup> – 17 <sup>th</sup>
Thanksgiving break	November 24 <sup>th</sup> – December 1 <sup>st</sup>
Mexico missions trip	December
Winter break	December 20 <sup>th</sup> - January 3 <sup>rd</sup>
Winter retreat	January 19 <sup>th</sup> - 21 <sup>st</sup>
Serving at our District Winter Camp	January/ February
Dominican Republic Mission Trip	May 18 <sup>th</sup> -26 <sup>th</sup>
Host-Family BQQ	May 30 <sup>th</sup>
ISD Commissioning Service / ISD Year Conclusion	May 31 <sup>st</sup>

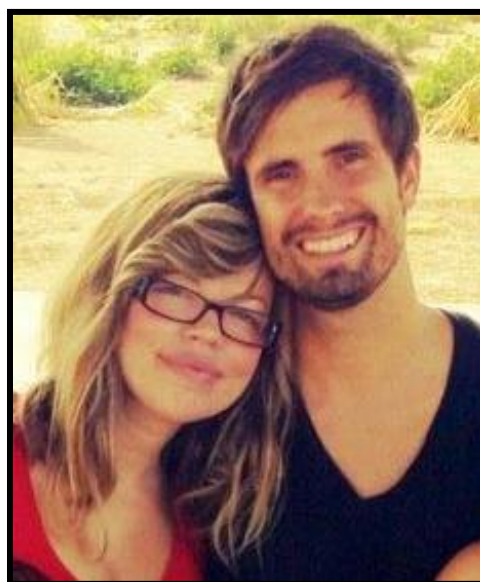
*\*Dates and events are subject to change at Church and Directors foresight.*

## Immersion San Diego Staff



### **Miranda & Joey Sprague: ISD Directors**

Joey and Miranda are the directors of the interns and the program logistically and spiritually. From overseeing the well-being and spiritual growth of each intern, to managing the ISD budget, calendar, scheduling and the behind the scenes tasks that keep ISD running smoothly.



### **Pastor Benji & Jen Horning: Generations Pastor**

Benji & Jen are the pastors who provide oversight to ISD and supply some of the vision and care for the program and its direction.



### **Pastor Dan & Tracy Daugherty**

As the Sr. Pastors of our church, Pastors Dan & Tracy are the driving force behind ISD as well as much of what happens in and through our church.

## Contact Information...

Feel free to contact our ISD staff at any time. We are here to serve you!

Name	Contact Phone Number	Email Address
Director: Miranda Sprague	760-716-3209	Miranda@buildingsolidlives.org
Director: Joey Sprague	760-855-9857	ISD@buildingsolidlives.org
Pastor: Benji Horning	760-670-6799	benji@buildingsolidlives.org

### Web-site Address:

[www.immersionSD.com](http://www.immersionSD.com)

[www.buildingsolidlives.org](http://www.buildingsolidlives.org)

### Mailing Address:

Immersion SD

P.O. Box 183

San Marcos, Ca 92069

### Offices & Warehouse:

1195 Linda Vista Dr. Ste. D

San Marcos, Ca 92078

### Phone Numbers:

Main Church Office Number

760-798-9418

Main Church Fax Number

760-744-2539